



SMARTHOME  
design

*Product Catalog*

High-end technology and homes of the future have been around for some time. But Smarthome takes it a step further by integrating these elements with your lifestyle. A smart home can do exactly what you want, including ... intuitively control lighting ... **BRILLIANT** ... integrate with your home entertainment system ... **WOW** ... interface with your security system to turn on lights ... **AWESOME** ... even work with **SYSTEM INTEGRATION** your heating and air conditioning... **COOL!** But you don't need to be home for a smart home to work. The controllers you use act as the



brains of your home and can be as sophisticated as you want. So whether you want to set up simple timed on/off lighting events, or program multi-faceted scenes at

particular times on certain days, Smarthome technology can work for you. Now who's smart, you or your home?

## **YOU ARE ALREADY WIRED FOR A SMARTHOME**

*Smarthome uses the electrical wiring that's already in your home as the backbone for your system. The 110V wiring acts as a communications network, connecting controllers with receiving units. By using wiring that's already there, you'll have dramatically reduced labor and materials cost.*

*Smarthome systems are also incredibly flexible, offering you the ability to make changes or add new equipment at any stage during or after the completion of the project, including adding new dimmers and switches without running any new wires.*



With a Smarthome system, you can have the convenience of scene lighting control to make you feel safe and comfortable. From the time you walk in the door, you can control any light in your home with a touch of a switch, button or touchscreen. You can even create one-touch lighting scenes for every occasion, like dinnertime, parties or movie-watching. These custom scenes can involve as many lights in as many rooms as you desire. Now that's a smarthome! **EVERY OCCASION LIGHTING**

You can design and implement a Smarthome system at any stage in the home's life span, whether it's before the first nail is driven, or

**IDEAL FOR NEW CONSTRUCTION AND RETROFIT APPLICATIONS ALIKE**

after you've lived in the home for years. The beauty

of a Smarthome system is that it can start small, and grow along with your needs and budget. This makes designing a system as

easy as choosing the perfect

Smarthome device for each light or appliance you

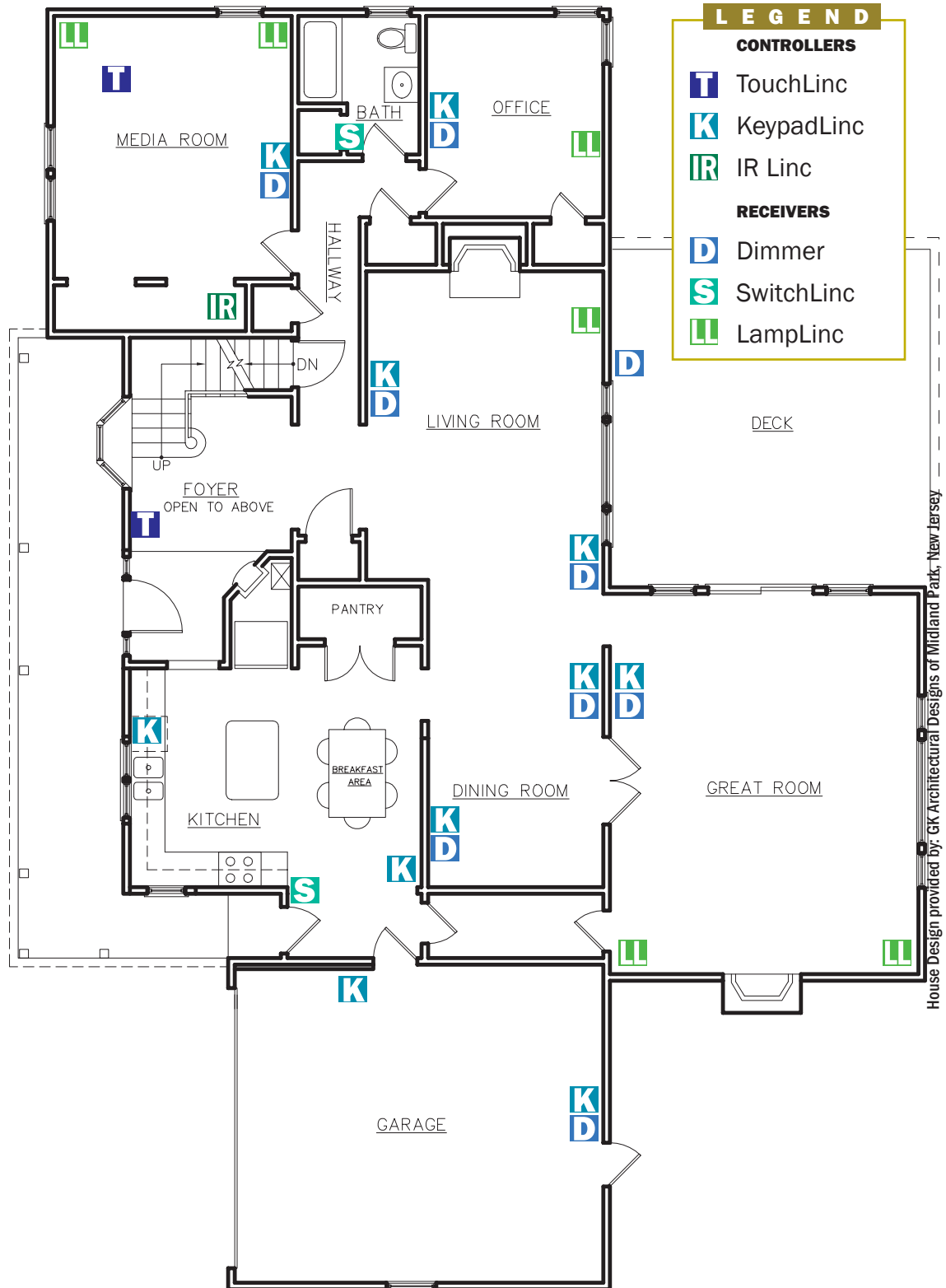
want to control, and picking the optimum location you want to control it from.

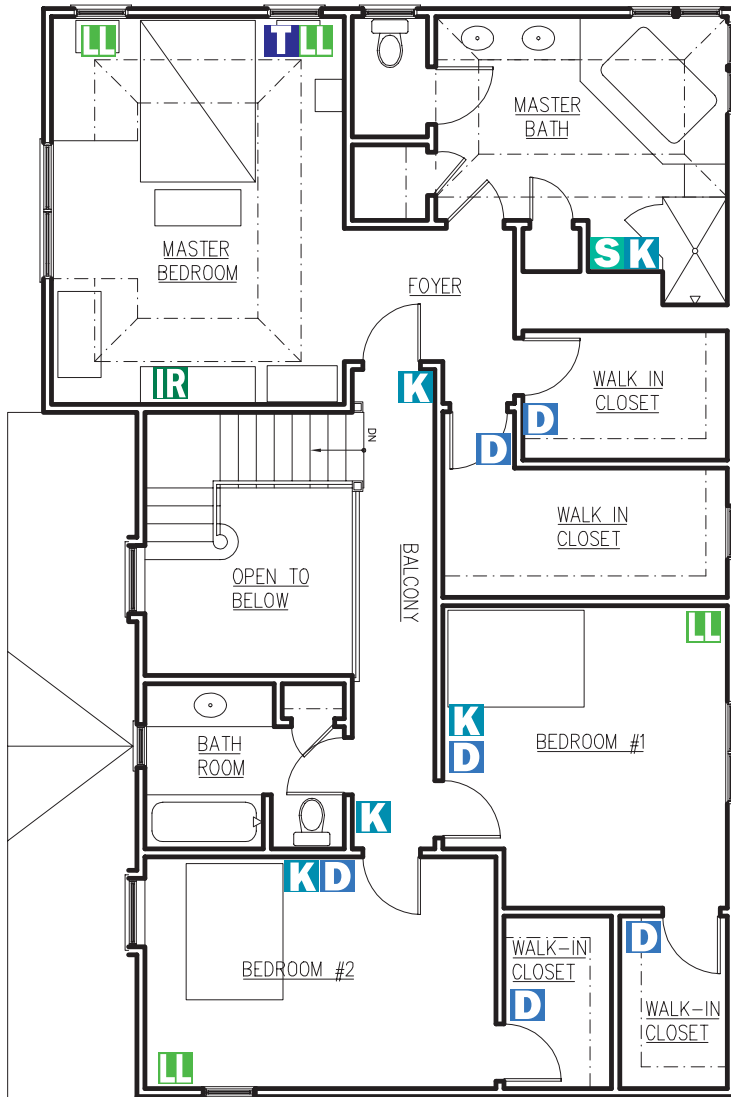


# TAKE A WALK THROUGH A SMARTHOME

Futuristic home automation has previously been beyond the reach of many people due to high costs. Now an affordable reality, Smarthome devices are economical enough to have in every room. These practical and stylish keypads, switches, touchscreens and plug-in dimmers are easily combined to make an ordinary house a smarthome.

In this typical three-bedroom home, each room has been fitted with SwitchLincs, LampLincs, TouchLincs and KeypadLincs suited to the décor and use of each room. For example, SwitchLinc 2-Way Dimmers in a child's room ensure that the lights turn off after a pre-determined amount of time, and stay off once you put your child to bed. In addition, a SwitchLinc Plus adds dramatic multi-scene lighting effects to the living room at the touch of a button from a KeypadLinc or a SwitchLinc 2-Way.





## IT'S THIS SIMPLE:

### 1 Select which devices you wish to control

- WHICH LIGHTS?
  - Security floodlights
  - All living area lights
  - Bedroom lights
  - Pool, spa, deck lights
  - Garage lights
  - Basement lights
  - Hallways, pathways, etc.
  - Closets
- WHICH OTHER SYSTEMS?
  - Audio/Video equipment
  - Thermostats
  - Security systems
  - Pool/Spa equipment

### 2. Determine which Receiver is needed

- KEYPAD
  - 6-button
  - 8-button
- DIMMER
  - 2-way
  - Plus
  - PLC
- SWITCH
  - 2-Way
  - PLC
- PLUG-IN DIMMERS
  - 2-Way
  - Plus
  - PLC

### 3 Establish locations for Keypads and Touchscreens

- ENTRANCE
- DOORWAYS
- FOYER
- BEDROOMS
- GARAGE
- KITCHEN
- STAIRCASES (TOP OR BOTTOM)
- LIVING ROOM
- DINING ROOM
- HOME THEATER
- DECKS, POOLSIDE

### 4 Figure out which Controllers are needed :

- TOUCHSCREENS
- WALL-MOUNTED KEYPADS
  - 6-button
  - 8-button
- TIMERS

### 5 Choose which other systems you want to tie into your smarthome

- COMPUTER CONTROL
  - Create lighting scenes based on conditionals
  - When the TV is turned on after 6pm dim the lights
  - If you turn on a light, turn it off after a certain amount of time
- INFRARED CONTROL
  - Use keypads to control infrared devices, amplifiers, CD players
  - Use keypads to control volume and channel selection
- RELAY CONTROL
  - Flash lights when your security system is tripped
  - Create scenes when you open your garage
  - Control your sprinklers
  - Turn speakers on or off

### 6 Use the proper tools to ensure that you have a reliable communication network to enjoy your smarthome

- SIGNALINC
- FILTERLINC

*Your house is  
already wired  
to be a Smarthome*



# KEYPADLINC™

Elegant, Customizable In-Wall PLC Controller that is a Dimmer Too



Control your entire home with these elegant keypads that blend perfectly into even the most upscale décor. The custom buttons are easy to use, while gentle backlighting makes them easy to find in the dark. These keypads can control single lights, trigger elaborate multi-room scenes or send commands to control audio/video equipment. A touch of a button can turn entire groups of lights off, saving energy and steps.

KeypadLincs can also manage lighting throughout your home to suit your mood or desires. They can dim the lights in your home theater as they extinguish lights in unoccupied areas of the house. You can also see

at a glance if the lights in another room are on or off by looking at the glowing buttons.

## SPECIFICATIONS

- Addresses:** 1 PLC Base (Primary) Address of 256 possible, Up to 64 PLC Scene Addresses of 255 possible
- On-Level:** (Primary Address) 1 of 31 possible (3.2%-100%)  
(Scene Address) 1 of 32 possible (0%-100%)
- Fade-On Rate:** 0.125 to 9 seconds if programmed locally,  
0.125 seconds to 9 minutes if programmed remotely

Dimensions:	FRONT BRACKET	MAIN BODY
Width:	1.73"	1.73"
Height:	4.14"	2.76"
Depth:	1.67"	1.44"
Weight:	4.3 oz.	

## FEATURES

- 6 or 8 buttons
- Integrated dimmer controls up to 450 watts
- Can take part in as many as 64 lighting scenes
- Amber, white or blue backlighting
- User programmable fade on/off rates
- Backlit buttons show device status, status request capable
- Fast, easy, flexible programming
- Removable plastic caps

Model Number	Name	Maximum Wattage	Number of Buttons	Integrated Dimmer	Fade On / Preset Level Dim	2-Way Compatible	Control Scene Lighting	May be part of a Scene	Noise Rejection	LED Night Light	Low Voltage Lighting	Compact Fluorescent	Ceiling Fans	3-Way Ready	Requires Neutral Wire	White, Ivory or Both	White or Blue LEDs
12063W	KeypadLinc 6		6			●	●	●	●	●	●	●	●	●	W		
12064W	KeypadLinc 8		8			●	●	●	●	●	●	●	●	●	W		
12073W	KeypadLinc 6 with Dimmer	450W	6	●	●	●	●	●	●	●	●	●	●	●	W	●	
12074W	KeypadLinc 8 with Dimmer	450W	8	●	●	●	●	●	●	●	●	●	●	●	W	●	

● may cause humming

# SWITCHLINC™

The Most Advanced Remote Control Dimmers and Switches Available!



SwitchLinc



Multi-Way Companion Switch

SwitchLincs provide the elegance and reliability of an expensive lighting control system without the associated costs and wiring. Most important is their practicality. Experience has taught us that if it's not convenient, it won't be used. All SwitchLincs install like a regular light switch and communicate over your home's existing electrical wiring.

Depending on which model you choose, each dimmer can take part in up to 64 lighting scenes with its own dim level and fade-on rate for each scene. Certain models even provide feedback when

asked of its status (including dim level). Because they also have the ability to transmit, SwitchLincs can also control any compatible device, including thermostats, automated drapes, and much more. Best of all, the modular design means you can start with a basic system and add new devices over time. The different technologies are quietly working all around you to draw together your smarthome.

## SPECIFICATIONS

**Addresses:** 1 PLC Base (Primary) Address of 256 possible, Up to 64 PLC Scene Addresses of 255 possible  
**On-Level:** (Primary Address) 1 of 31 possible (3.2%-100%) (Scene Address) 1 of 32 possible (0%-100%)  
**Fade-On Rate:** 0.125 to 9 seconds if programmed locally, 0.125 seconds to 9 minutes if programmed remotely

Dimensions:	FRONT BRACKET		MAIN BODY	
	1000W	600W	1000W	600W
<b>Width:</b>	2.36"	1.73"	1.73"	1.73"
<b>Height:</b>	4.14"	4.14"	2.76"	2.76"
<b>Depth:</b>	1.73"	1.73"	1.40"	1.40"
<b>Weight:</b>	4.3 oz.		4.0 oz.	

## FEATURES

- Certain models are 2-way capable
- Most models can take part in up to 64 lighting scenes
- True rocker action
- Adjustable fade-on rate
- Adjustable preset level
- No more code wheels for address setting
- Enhanced powerline sensitivity
- Advanced noise rejection

Model Number	Name	Maximum Wattage	2-Way Compatible	Scene Lighting	True Rocker Switch	Fade On / Preset Level Dim	Noise Rejection	LED Night Light	Fluorescent	Low Voltage Lighting	Compact Fluorescent	Ceiling Fans	3-Way Ready	Dimming At Switch	Dimming via PLC	Requires Neutral Wire	White, Ivory or Both
2380	2-Way Dimmer	600W	●	●	●	●	●	●	●	●	●	●	●	●	●	●	B
2381	2-Way Dimmer	1000W	●	●	●	●	●	●	●	●	●	●	●	●	●	●	B
2383	2-Way Switch	5A	●	●	●	●	●	●	●	●	●	●	●	●	●	●	B
2386	PLUS Dimmer	600W	●	●	●	●	●	●	●	●	●	●	●	●	●	●	B
2384	PLC Dimmer	600W	●	●	●	●	●	●	●	●	●	●	●	●	●	●	B
2385	PLC Switch	5A	●	●	●	●	●	●	●	●	●	●	●	●	●	●	B
2387	Standard Dimmer	600W	●	●	●	●	●	●	●	●	●	●	●	●	●	●	B
2382	Multi-Way Companion		●	●	●	●	●	●	●	●	●	●	●	●	●	●	B

● may cause humming

# SWITHLINC™ RELAY

The only "Silent" Remote Controlled Switches Available



SwitchLinc



Multi-Way Companion Switch

The SwitchLinc Relay does not make the loud "clunk!" normally associated with turning on/off fluorescent lights. The click of the internal relay is barely noticeable and not much louder than the click of the front paddle.

The SwitchLinc Relay is designed for use with fluorescent lights, light motor loads, halogen lamps, and low voltage lighting transformers with a maximum load of 15 amps.

Most manufacturers units make a loud Clunk Like standard relay wall switches, SwitchLinc Relay is perfect for controlling fluorescent lights, electronic ballasts, halogen lamps and low-voltage lighting transformers. But SwitchLinc Relay improves on that concept by adding many features of our top-of-the-line SwitchLinc 2-Way family, including scene lighting.

## SPECIFICATIONS

**Addresses:** 1 PLC Base (Primary) Address of 256 possible, Up to 64 PLC Scene Addresses of 255 possible

**On-Level:** (Primary Address) 1 of 31 possible (3.2%-100%) (Scene Address) 1 of 32 possible (0%-100%)

**Fade-On Rate:** 0.125 to 9 seconds if programmed locally, 0.125 seconds to 9 minutes if programmed remotely

Dimensions:	FRONT BRACKET	MAIN BODY
	600W	600W
<b>Width:</b>	1.73"	1.73"
<b>Height:</b>	4.14"	2.76"
<b>Depth:</b>	1.73"	1.40"
<b>Weight:</b>	4.3 oz.	4.0 oz.

## FEATURES

- On/Off "click" is more than 80% quieter than other relay switches
- Ideal for controlling fluorescent lights, electronic ballasts, halogen lamps and low-voltage lighting transformers
- Generates less heat than switches built with a triac
- 15 Amp load capacity
- Available in 2-way
- True rocker functions and styling that everyone understands
- Most models can be a member of 64 different scenes
- All units are 3-way ready
- No code wheels for address setting
- Enhanced powerline sensitivity

Model Number	Name	Maximum Wattage	2-Way Compatible	Scene Lighting	True Rocker Switch	Fade On / Preset Level Dim	Noise Rejection	LED Night Light	Fluorescent	Low Voltage Lighting	Compact Fluorescent	Ceiling Fans	3-Way Ready	Dimming At Switch	Dimming via PLC	Requires Neutral Wire	White, Ivory or Both	
23883	2-Way Switch	15A	●	●	●	●	●	●	●	●	●	●	●	●	●	●	●	B
23885	PLC Switch	15A	●	●	●	●	●	●	●	●	●	●	●	●	●	●	●	B

● may cause humming

# SWITCHLINC™ RX

A Full-Featured Dimmer for Every Home



SwitchLinc



Multi-Way Companion Switch

Don't use an inferior product because your house is old or the switch outlet boxes don't have neutral wires. This line of no neutral needed dimmers offers all the same benefits of our standard SwitchLinc line, yet only requires the basic LINE and LOAD wires found on virtually every 110V switch. This technology breakthrough opens the door for home automation in every home in North America!

The SwitchLinc RX is available for controlling incandescent loads of 40 to 600 watts plus it has all the usual SwitchLinc features like adjustable fade rate, LED bar, and three-way compatibility. Available in three models.

## FEATURES

- First ever scene capable dimmer that doesn't need a neutral wire in the electrical box
- Adjustable fade-on rate and preset-on level
- Responds to preset dim commands
- Enhanced powerline sensitivity receive circuitry
- All units are 3-way ready

## SPECIFICATIONS

**Addresses:** 1 PLC Base (Primary) Address of 256 possible, Up to 64 PLC Scene Addresses of 255 possible  
**On-Level:** (Primary Address) 1 of 31 possible (3.2%-100%) (Scene Address) 1 of 32 possible (0%-100%)  
**Fade-On Rate:** 0.125 to 9 seconds if programmed locally, 0.125 seconds to 9 minutes if programmed remotely

Dimensions:	FRONT BRACKET	MAIN BODY
	600W	600W
<b>Width:</b>	1.73"	1.73"
<b>Height:</b>	4.14"	2.76"
<b>Depth:</b>	1.73"	1.40"
<b>Weight:</b>	4.3 oz.	4.0 oz.

Model Number	Name	Maximum Wattage	2-Way Compatible	Scene Lighting	True Rocker Switch	Fade-On/ Preset Level Dim	Noise Reduction	LED Night Light	Fluorescent	Low Voltage Lighting	Compact Fluorescent	Ceiling Fans	3-Way Ready	Dimming at Switch	Dimming via PLC	Requires Neutral Wire	White, Ivory or Both
23862	RX Plus Dimmer	600W	●	●	●	●	●	●	●	●	●	●	●	●	●	●	●
23842	RX PLC Dimmer	600W	●	●	●	●	●	●	●	●	●	●	●	●	●	●	●
23872	RX Deluxe Dimmer	600W	●	●	●	●	●	●	●	●	●	●	●	●	●	●	●

● may cause humming

# TOGGLELINC™

The Most Advanced Remote Control Dimmers and Switches with the Classic Toggle Style Look



ToggleLincs provide the elegance and reliability of expensive lighting control without the associated costs and wiring. Most important is its practicality. Experience told us that if it wasn't convenient, it wouldn't be used, so any settings you make can easily be changed. All ToggleLincs install like a regular light switch and communicate over your home's existing electrical wiring. Depending on which model you choose, each dimmer can take part in 64 lighting scenes with its own dim level and fade-on rate for each scene. Certain models provide feedback when asked of its status (including dim level). They can also control any compatible device, including thermostats, automated

drapes, or other systems because they transmit. Best of all, the modular design means you can start with a basic system and add new devices over time.

## SPECIFICATIONS

**Addresses:** 1 PLC Base (Primary) Address of 256 possible, Up to 64 PLC Scene Addresses of 255 possible

**On-Level:** (Primary Address) 1 of 31 possible (3.2%-100%) (Scene Address) 1 of 32 possible (0%-100%)

**Fade-On Rate:** 0.125 to 9 seconds if programmed locally, 0.125 seconds to 9 minutes if programmed remotely

Dimensions:	FRONT BRACKET	MAIN BODY
	600W	600W
<b>Width:</b>	1.73"	1.73"
<b>Height:</b>	4.14"	2.76"
<b>Depth:</b>	1.73"	1.40"
<b>Weight:</b>	4.3 oz.	4.0 oz.

## FEATURES

- True toggle functions and styling that everyone understands
- Certain models are 2-way capable
- Most models can be a member of 64 different scenes
- Adjustable fade on-rate
- Adjustable preset on-level
- Will accept pre-set dims commands
- All units are 3-way ready
- No code wheels for address setting
- Enhanced powerline sensitivity
- Advanced noise rejection
- 600 watt load capacity

Model Number	Name	Maximum Wattage	2-Way Compatible	Scene Lighting	True Toggle Switch	Fade On / Preset Level Dim	Noise Rejection	LED Night Light	Fluorescent	Low Voltage Lighting	Compact Fluorescent	Ceiling Fans	3-Way Ready	Dimming At Switch	Dimming via PLC	Requires Neutral Wire	White, Ivory or Both
23890	2-Way Dimmer	600W	●	●	●	●	●	●	●	●	●	●	●	●	●	●	B
23893	2-Way Switch	5A	●	●	●	●	●	●	●	●	●	●	●	●	●	●	B
23896	PLUS Dimmer	600W	●	●	●	●	●	●	●	●	●	●	●	●	●	●	B
23894	PLC Dimmer	600W	●	●	●	●	●	●	●	●	●	●	●	●	●	●	B
23895	PLC Switch	5A	●	●	●	●	●	●	●	●	●	●	●	●	●	●	B
23897	Deluxe Dimmer	600W	●	●	●	●	●	●	●	●	●	●	●	●	●	●	B
23892	Multi-Way Companion	600W	●	●	●	●	●	●	●	●	●	●	●	●	●	●	B

● may cause humming



# APPLIANCELINC™

Finally a Quiet Plug-in Appliance Switch!!



Take remote control of appliances and inductive loads to new levels with ApplianceLinc. This module enables you to remotely control low voltage transformers and other inductive devices to take part in whole-house scenes without the noise associated with relays.

## SPECIFICATIONS

**Addresses :** 1 PLC Base(Primary) address of PLC possible, up to 64 PLC scene addresses of 255 possible

**Max Current:** 15 Amps

**Max Wattage:** 480 watts

## FEATURES

- 80% quieter relay
- Certain models are 2-way capable and can take part in 64 scenes
- Pass-through outlet
- Selectable local control
- Enhanced powerline sensitivity
- Advanced noise rejection

Model Number	Name	Maximum Load	Maximum Wattage	Incandescent Loads	2-Way Compatible	Scene Lighting	Pass Through Receptacle	Noise Rejection	LED Indicator	Local Control Disable	Compact Fluorescent	White, Ivory or Both
2001STW	2-Way Plug-in	15 A	480W	●	●	●	●	●	●	●	W	
2001STW	2-Way Plug-in	15 A	480W	●	●	●	●	●	●	●	W	
2002SHL	2-Pin Plug-in	15 A	480W			●	●	●	●	●	W	
2001SHL	3-Pin Plug-in	15 A	480W			●	●	●	●	●	W	

# TOUCLINC TIMER™

Add Complete Control and a Touch of Style to Every Room



Although touchscreen technology has been around for a while, it was generally beyond the reach to most homeowners due to high costs. Now an affordable reality, TouchLinc controllers are economical enough to have in every room, And why not? They can replace large multi-gang dimmer plates and add a touch of style to any wall.

This practical and stylish controller is easily combined with any Smarthome device for total control via a touch-sensitive LCD screen.

Programming can be done directly on screen, and there is virtually no limit of devices that can be included in a scene.

## SPECIFICATIONS #1275WP

<b>Touchscreen Resolution:</b>	160 x 128 FSTN Super twist LCD Blue Electro-luminescent backlight
<b>Membrane Type:</b>	Glass for durability and better visibility
<b>Viewable Area:</b>	3.75" x 3.125"
<b>Operation:</b>	Up to 12 submenus, with up to 6 devices each Up to 12 timer events, with up to 5 devices each Up to 12 Macro events, with up to 12 devices each Each device, timer, and macro label can up to 12 characters
<b>Power Consumption:</b>	90mA (backlight off), 150mA (backlight on)
<b>Addresses:</b>	Controls all 256 possible addresses
<b>Mounting:</b>	Wall-mountable to a Double gang J-Box. Table-Top Stand (Model 1270PD)
<b>Dimensions:</b>	
<b>Width:</b>	4.5"
<b>Height:</b>	5.5"
<b>Depth:</b>	1.0"
<b>Weight:</b>	8 oz.

## FEATURES

- On screen programming – no PC is needed
- 12 timer events that can send five different commands
- 12 macro events that can send 12 different commands
- Directly control up to 72 different devices with any combination of addresses
- Will transmit all preset dim commands
- Built-in astronomical clock
- Programming application makes setting SwitchLinc scenes a snap



# POWERLINC CONTROLLER

The World's First USB Downloadable Automation Interface to Control Your Home



The PowerLinc Controller is a stand-alone home automation interface for controlling lights, appliances, heating/air conditioning systems and alarm systems. This module includes on-board processing so timers and macros can be downloaded. No longer is a host computer needed for running a program.

The PowerLinc Controller includes Smarthome Manager Basic, a suite of software tools that not only sets up your system, but also includes some trick software to make automating your home easier. You can to set up timer schedules, conditionals and triggers from your PC, yet the settings are stored in the plug-in module, so you won't

have to keep your PC running to activate timed functions. Additionally, PowerLinc Controller uses Microsoft's Human Interface drivers that are already in use on your computer so you won't have to install any additional drivers or worry about conflicts with other hardware or software.

## FEATURES

- Stores over 1,000 timer and macro commands in 32KB of memory
- Battery backed-up memory and clock for PC-free operation
- Easy and trouble-free USB connection
- Includes Smarthome Manager Basic software
- Feed-through outlet won't block you from plugging in other devices

## SPECIFICATIONS #1132CU

Timer events based upon time every day, randomized, day of the week, month, or a specific date

Celestial clock that tracks sunrise and sunset times

Macro triggers with conditionals

Stores over 1,000 commands (depending on complexity) in 32KB of EEPROM memory

Sends unique commands like Preset Dims, individual key presses on only, off only, etc.

Setup modules by room or section of the house for easy organization

Handy setup wizards for Smarthome Design series of receiver modules, like SwitchLinc

PLC Signal log monitor

Includes the full integration for SmarthomeLive

Microsoft Windows® 98se and above (with exception of Windows 2000 Server)

CD-ROM drive required to load the software

### Dimensions:

Width: 2.5"

Height: 4"

Depth: 1.5"

Weight: 9 oz.

## IR LINC™

Make Any PLC Controller Control Audio/Video Equipment!



Smarthome equipment can communicate with any infrared device in your home, including TVs, audio components, satellite dish systems, cable boxes, DVD players and VCRs. With a built-in IR sensor for learning from

existing remote controls, you can create scenes that integrate virtually all electronic products. It's great for making complex home entertainment systems seem easy by automatically turning only the necessary equipment you need when you want to watch a DVD, play a CD or watch the TiVo.

### SPECIFICATIONS #1623

Will learn 31 IR signals from your existing remotes

**Internal IR Blaster Range:** 15-20ft

**Infrared Signal Bandwidth:** < 100 KHz

**Dimensions:**

**Width:** 4.75"

**Height:** .75"

**Depth:** 3.5"

**Weight:** 4.8 oz.

### FEATURES

- A single PLC command can trigger multiple IR commands
- Multiple units can be used within a home; each unit is an independent device
- Easy to install and program
- Can perform long or short blasts
- Probes can be used to determine the "true state" of your A/V equipment
- Understands 256 addresses in any combination
- Multiple IR emitters, two built-in IR blasters and three infrared ports for stick-on emitters
- Programming retained after a power outages

## I/O LINC™

Add Analog and Digital Inputs, and Relay Outputs to Your Smarthome System!



Control and monitor sprinkler valves, security sensors, garage door openers or any low-voltage device with the I/O Linc. Each channel can be assigned a different function or address and can be mixed and matched as needed. You can even query any channel to verify its status.

### SPECIFICATIONS #1624

**Contacts Rated:** 24 volts AC or DC at 5 amps

**Dimensions:**

**Width:** 3.875"

**Height:** 1.25"

**Depth:** 2.75"

**Weight:** 5.2 oz.

### FEATURES

- Each channel can be assigned any PLC address
- Four single-pole, double-throw relays
- Probe capable for conditional logic input

# TEMPLINC™

Temperature Control Over Existing Wiring



Give your home the power to react to weather changes with TempLinc, a revolutionary sensor that sends signals to intelligent controllers when certain temperatures are detected.

## FEATURES

- Wireless thermostat
- Uses RCS-compatible temperature chart
- Fahrenheit or Celsius
- Reports on change
- Programmable set point reporting

## SPECIFICATIONS #1625

<b>Reports Temperatures:</b>	Between -28 °F and 131 °F.
<b>Power Consumption:</b>	1/2 Watt @ 120V AC
<b>Dimensions:</b>	
<b>Width:</b>	4.75"
<b>Height:</b>	.75"
<b>Depth:</b>	3.5"
<b>Weight:</b>	11.2 oz.

# POWERLINC™



PowerLinc USB is the first USB-based controller used for communicating the standard X10 protocol from your personal computer to your home automation equipment. Don't have a computer with a USB connection? No problem. We also offer the RS232 PowerLinc, which combines a two-way PLC interface with a 12VDC 300mA power supply, so you only need to use one power outlet instead of two.

## SPECIFICATIONS

<b>Cable:</b>	4' (RS232), 6' (USB)
<b>Power Consumption:</b>	Max 7 Watts
<b>Dimensions:</b>	
<b>Width:</b>	2.5"
<b>Height:</b>	4"
<b>Depth:</b>	1.5"
<b>Weight:</b>	5.0 oz.

## USB FEATURES #1132U

- Uses reliable and fast USB communications
- Includes two versions of Home Control Assistant software
- Pass-through, non-switched receptacle for convenience



## RS232 FEATURES #1132B

- RJ11/12 connection
- Eliminates having two plug-in devices
- Communicates extended X10/PLC code set
- Emulates PSC05/TW523 protocol
- Use with RCS thermostats and relay controllers

# BOOSTERLINC

Solve Your PLC Communication Problems with a Simple Plug-in Module



If you are into powerline carrier controls home automation and have a few modules and wall switches that just don't work right, then you need BoosterLinc. This simple plug in module will detect all PLC/X-10 signals on the line and amplify them in real time with no delays!

BoosterLinc plugs into any 120-volt 3-prong AC outlet for homes and business in North America. A pass-through outlet on the front allows any 120-volt device to be plugged in (it has no automation functions). A small diagnostic LED indicates the BoosterLinc is powered plus it flickers when PLC signals are amplified. Multiple BoosterLinc can be installed in one home.

BoosterLinc can solve localized problems a whole-house coupler-repeater can't handle. Coupler-repeaters have been used in the past for increasing the PLC signals for the whole house, but when it comes to solving a signal strength problem at the end of a circuit, they just can't offer any improvement. BoosterLinc is designed to be plugged into a specific circuit where the existing signal strength just doesn't seem to reliability trigger the receivers. BoosterLinc is able to operate in homes that have coupler-repeaters installed.

## FEATURES

- Multiple Boosters can be installed in a home
- Supports 3-phase electrical systems
- Narrow frequency band amplification prevents false triggering
- Fully compatible with PLC Bright and Dim commands
- Pass-through 15-amp outlet for any 120-volt device
- Simple plug-in operation
- Diagnostic LED
- Disables boosting if electrical noise is detected

## SPECIFICATIONS #4827

<b>Input Power:</b>	25 VAC, 60 Hz
<b>Recommended BoosterLincs:</b>	1 per 1000 feet of living area
<b>Mounting:</b>	North American 3-pin 120-volt, 15-amp outlet
<b>Addresses:</b>	Controls all 256 possible addresses & commands
<b>Status Indicator:</b>	Green LED (User Removable)
<b>Operating Temperature Range:</b>	40 degrees F to 104 degrees F
<b>Minimum PLC Transmit Level:</b>	3.16 Vp-p across 5 Ohms
<b>Minimum PLC Receive Level:</b>	10mV
<b>Dimensions:</b>	
<b>Width:</b>	2.46"
<b>Height:</b>	4.25"
<b>Depth:</b>	1.5"
<b>Weight:</b>	7.3 oz.

- ETL Listed for use in the U.S. and Canada

## SIGNALINC™

The First Plug-In Powerline Passive Phase Coupler!



Having trouble getting your receivers in one part of your home to operate? Sometimes signals have a hard time making the transition from one leg to the other. Plug-in a Signalinc™ and it will passively couple the signals

between the two phases of your home.

### SPECIFICATIONS #4816 (A2, B2, H)

3 or 4-pin plug-in configuration

Hard-wired configuration

Dimensions: PLUG-IN (4816A2, B2)    HARDWIRED (4816H)

Width:	2.5"	1.73"
Height:	4.0"	4.14"
Depth:	1.5"	1.67"
Weight:	5 oz.	4 oz.

### FEATURES

- Easy Installation
- Plug-in or hard-wired
- Feed-through outlet
- Small and compact with no cords or wires

## FILTERLINC™

A Solution for Eliminating Noise Issues!



These dual-function filters not only block unwanted interference on the powerline, they also prevent other devices from attenuating your signals, resulting in a virtually issue-free system.

### SPECIFICATIONS #1626

Attenuation: 49.4 dB

Pi Filter: 2-stage modified

Outlet: Feed-through unfiltered

Dimensions:

Width:	2.5"
Height:	4.0"
Depth:	1.5"
Weight:	5 oz.

### FEATURES

- Safety tested & approved
- Only plug-in filter safety approved over 5 amps
- 5 or 10-amp configurations
- Creates a reliable powerline network

## SIGNALINC PLUG-IN COUPLER/REPEATER

A Plug-in Solution to Repeating Signals



This unit actively amplifies and re-generates PLC signals, providing receivers with a stronger signal than if received directly from the originating transmitter via the non-amplified (passive) Signalinc.

It simply plugs into an existing clothes dryer outlet and includes a

feed-through outlet for your existing dryer.

### SPECIFICATIONS #4826A2 (B2)

Dimensions:

Width:	2.5"
Height:	4.0"
Depth:	1.5"
Weight:	5 oz.

### FEATURES

- Amplifies signals to a full 4 volts
- Easy installation
- 3- or 4-pin configuration

## TESTERLINC™

A Tool that Fits Every Budget



This small, but powerful device, can easily help troubleshoot your system by displaying in real time the signals on the AC line plus much more.

### SPECIFICATIONS #4819A    FEATURES

4819A: Includes 1132B

4819: Display only

Dimensions:

Width:	4.25"
Height:	2.7"
Depth:	1.4"

\* 4819 Requires a PowerLinc II Interface 1132B

- Easy-to-read 2-line, 16 digit alphanumeric LCD display
- Displays PLC/X10 address & quality
- Detects all activity including noise
- Logs up to 63 commands

# Tools and Accessories

## TECHNICALLY SPEAKING

*As a manufacturer and distributor, Smarthome's reputation remains unchallenged; integrators, contractors, dealers, distributors and end-users agree that Smarthome is serious about the quality and design of their products. With specialist engineers and designers on hand, Smarthome products are unrivaled for quality and performance in the home automation industry.*

*By creating product that functions in every conceivable environment, Smarthome has helped home automation evolve from "plug and pray" to a smart, intuitive technology capable of managing all common household systems, regardless of the brand A thru X.*

*The smart in Smarthome means that we use proven technology with an open architecture design that communicates with other systems, rather than limiting future growth with a proprietary language. By using powerline carrier protocols like X10, we remain fully compatible with all existing brands on the market today.*

*Smarthome Products are QA certified to ISO9002, and every 120 VAC product is certified by ETL to nationally recognized standards.*



SMARTHOME  
design

**SMARTHOME MFG**

16542 Millikan Avenue, Irvine, California 92606  
1.800.SMART.45 • 949.260.0930 (Fax)  
sales@smarthomemfg.com